



FOR SALE

£249,995

82 Lichfield Road, Baffins,
Portsmouth, PO3 6DF.

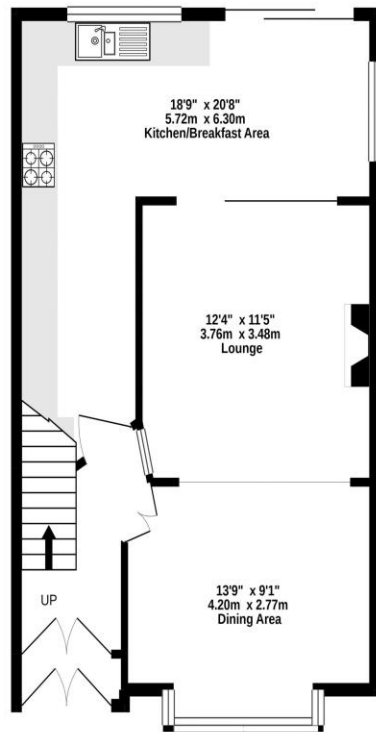
ESTATE  AGENTS

**LAWSON
ROSE**

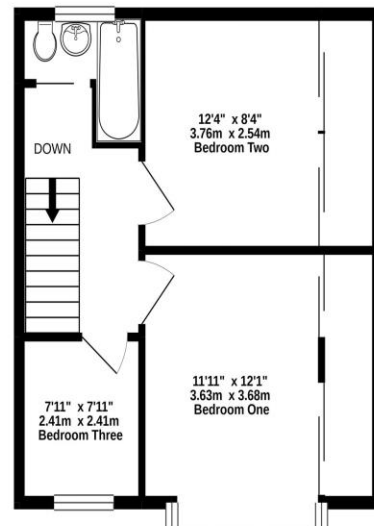
£249,995

82 Lichfield Road, Baffins, Portsmouth

GROUND FLOOR



1ST FLOOR



Whilst every attempt has been made to ensure the accuracy of the floorplan contained here, measurements of doors, windows, rooms and any other items are approximate and no responsibility is taken for any error, omission or mis-statement. This plan is for illustrative purposes only and should be used as such by any prospective purchaser. The services, systems and appliances shown have not been tested and no guarantee as to their operability or efficiency can be given.
Made with Metropix ©2021

Lawson Rose welcome to the market this three-bedroom, end of terrace, double bay & forecourt property located in Lichfield Road, Baffins. Offered with no forward chain, this well-loved home offers an array benefits and would make an ideal family home. The ground floor offers an open plan living space with an extended kitchen/breakfast room to its rear. There is a well-kept mature west facing garden which also provides side pedestrian access and access to a well sized garage used for storage. The first floor then has three good sized bedrooms, plus a fitted bathroom suite. An internal viewing is highly recommended, for further information or to arrange a viewing, please contact the Lawson Rose office on 02392 367779.

Services: Gas, water, electricity and mains drainage are available. Please note that none of the services or appliances have been tested by Lawson Rose Estate Agents. **Council Tax:** Portsmouth City Council - C (£1,619.34).



02392 367 779 - contactus@lawsonrose.com
131 Winter Road, Southsea, PO4 8DS



